

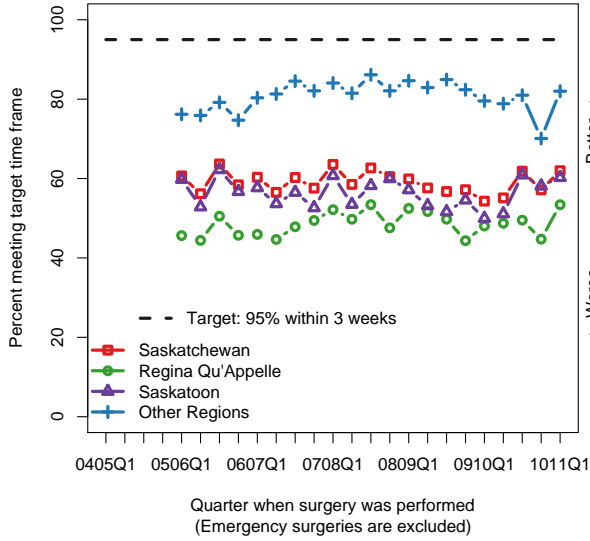
Percent of Cases Meeting the SSCN Target Time Frames for Surgeries Performed from 01-Jan-2010 to 30-Jun-2010

Health Region of Service	SSCN Priority Level (emergency cases excluded)			
	I (95% within 3 weeks)	II (90% within 6 weeks)	III (90% within 3 months)	IV (90% within 12 months)
Sun Country	62%	67%	36%	98%
Five Hills	89%	95%	99%	100%
Cypress	62%	50%	95%	100%
Regina Qu'Appelle	49%	38%	59%	76%
Sunrise	80%	91%	89%	90%
Saskatoon	59%	45%	62%	83%
Heartland	72%	NA	100%	100%
Kelsey Trail	65%	81%	99%	100%
PA Parkland	71%	66%	84%	96%
Prairie North	80%	63%	92%	100%
Total	60%	48%	70%	87%

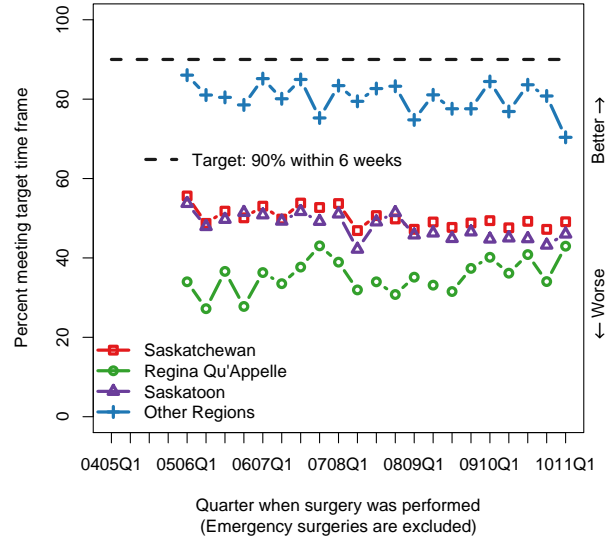
Notes

- If the number of surgeries performed for a particular priority level and region combination is less than or equal to 5, then the percentage of cases meeting the target time frame was not calculated and is indicated with "NA".
- In the trend graphs on the following page, data for 2004-05 is suppressed because cases booked before the beginning of the registry were not necessarily back scored.
- Trends for Priority Level I surgeries should be viewed with caution as the cancer question on all scoring tools changed in December 2007. Prior to that date, all proven or suspected cancer cases were automatically assigned to Priority Level I. Now the cancer question distinguishes between invasive cancer (maximum wait of 3 weeks), indolent cancer (maximum wait of 3 months) and scheduled screening or follow up (maximum wait of 12 months).
- The score for cataract surgery of the second eye has been adjusted upward retrospectively to give these cases higher priority. This change has not yet been implemented in the regions as consultations with ophthalmologists are still underway.
- In February and March of 2009, following consultations with surgeons, the Urgency Profiles of 402 procedures (mainly in orthopaedics) were changed. To ensure continuity of trends, these changes have been applied retrospectively to the calculation of the Priority Levels. This means that historical results will differ from those released prior to February 2009.
- Currently, emergency surgery is reported to the Registry based on region-defined emergency levels (there is no provincial definition). Scored cases reported as Emergency Level IV are included as non-emergency cases to improve consistency among regions. The category is used by some, but not all regions, to identify the least urgent emergency cases.
- The results are based on the August 3, 2010 refresh of the SSCN Surgical Patient Registry data mart.

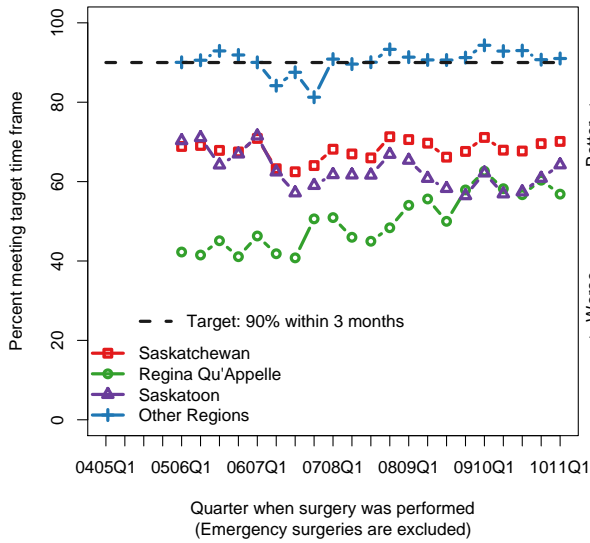
Percentage of cases meeting the target time frame for Priority Level I



Percentage of cases meeting the target time frame for Priority Level II



Percentage of cases meeting the target time frame for Priority Level III



Percentage of cases meeting the target time frame for Priority Level IV

