

Cataract Surgery - High Risk Patients (Priority I, II and III cases) Pan Canadian Benchmark: 16 weeks (112 days)

Summary for cases performed in the past two quarters (01-Jan-2010 to 30-Jun-2010)

Measure	Saskatchewan	Regina	Saskatoon	Other Regions*
Number of cases performed	2,637	794	975	868
Percent of cases performed within 16 weeks	91%	83%	94%	96%
Median wait time (in days) [†]	27	63	17	14
90th percentile wait time (in days) [‡]	106	146	90	62

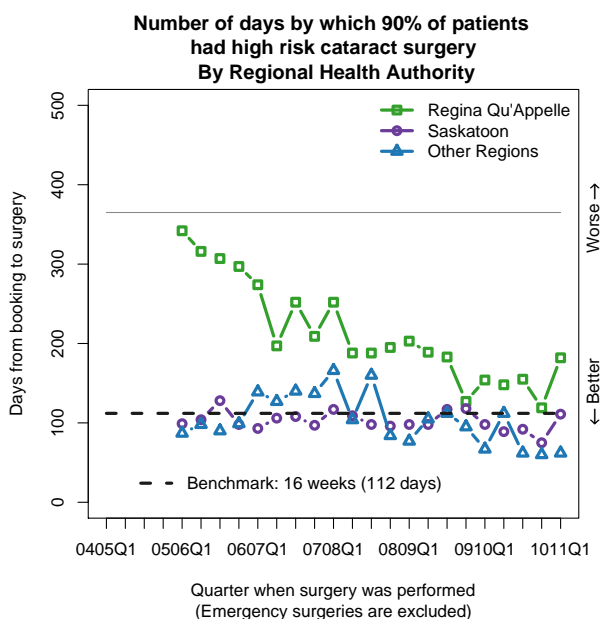
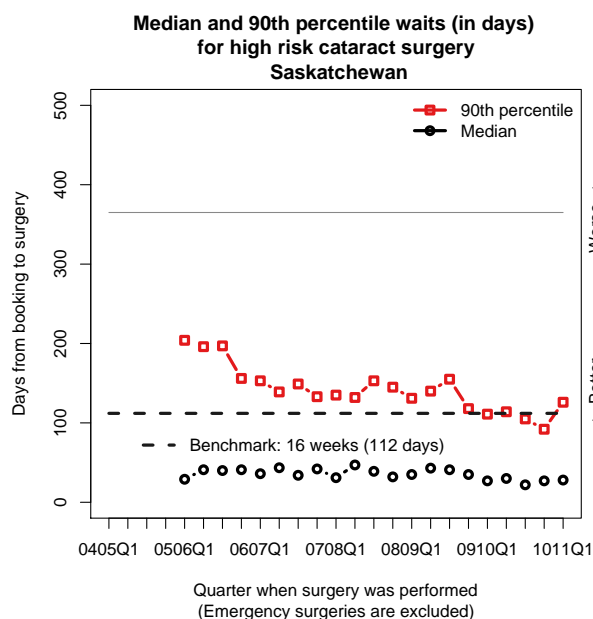
Summary of cases waiting

Measure	Saskatchewan	Regina	Saskatoon	Other Regions*
Number of cases waiting on 31-Mar-2005	1,365	549	691	125
Number of cases waiting on 30-Jun-2010	1,211	431	538	242
Percent of cases waiting on 31-Mar-2005 that had already waited longer than 16 weeks	26%	46%	13%	14%
Percent of cases waiting on 30-Jun-2010 that had already waited longer than 16 weeks	18%	27%	11%	15%

* Cataract procedures are also performed in Prince Albert Parkland, Five Hills, Cypress, Sunrise, Kelsey Trail and Prairie North health regions. Information on current wait times by region is available on this web site in [Wait Times/Lists \(by Specialty\)](#).

[†] The median wait time is the time by which 50% of cases had surgery.

[‡] The 90th percentile wait time is the time by which 90% of cases had surgery.



Notes

- In Saskatchewan's patient assessment system, Priority Levels I-III are cases with different degrees of urgency that need to be prioritized, while Priority IV cases are elective cases that can be done in-turn within a longer target time frame of 12 months. For purposes of assessing performance on the pan Canadian benchmark for cataract surgery, patients assessed at Priority Levels I-III are assumed to be high-risk patients and others are assumed to be low-risk patients. Emergency cases are excluded.

- The urgency profile for cataract procedures in the Saskatchewan system is currently under review. For purposes of assessing performance on the pan Canadian benchmark, a change to the urgency profile is assumed that identifies approximately 40% of cataract cases as Priority Level I-III cases. The adjustment provides a higher priority to the the second eye when surgery on two eyes is booked at the same time. The wait for the second eye starts only when the surgery on the first eye has been done. Without this adjustment, only about 11% of cases are identified as priority I-III cases.
- No data is shown for 2004-05 because some of the cases performed that year were booked prior to the establishment of the Registry and were not assigned to Registry priority levels.
- Results are based on the August 3, 2010 refresh of the SSCN Surgical Patient Registry data mart.

Cataract Surgery - Lower Risk Patients (Priority IV cases)

SSCN Target Time Frame: 90% within 12 months (365 days)

Summary for cases performed in the past two quarters (01-Jan-2010 to 30-Jun-2010)

Measure	Saskatchewan	Regina	Saskatoon	Other Regions*
Number of cases performed	4,027	1,273	932	1,822
Percent of cases performed within 12 months	96%	95%	100%	95%
Median wait time (in days) [†]	65	56	132	51
90th percentile wait time (in days) [‡]	270	196	259	312

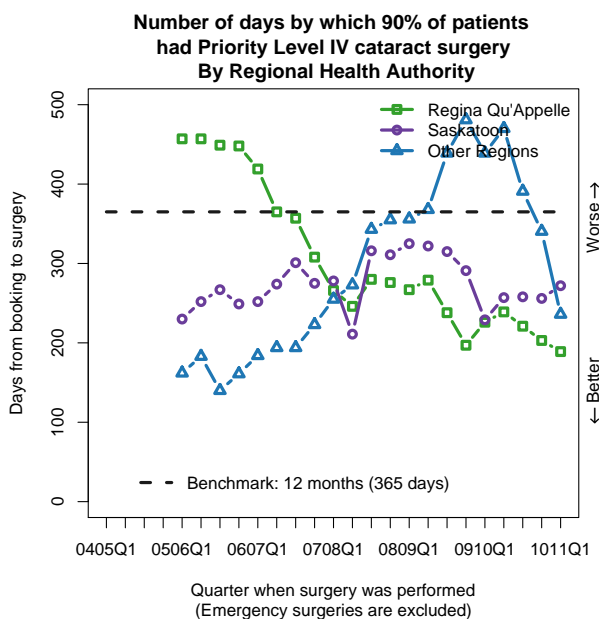
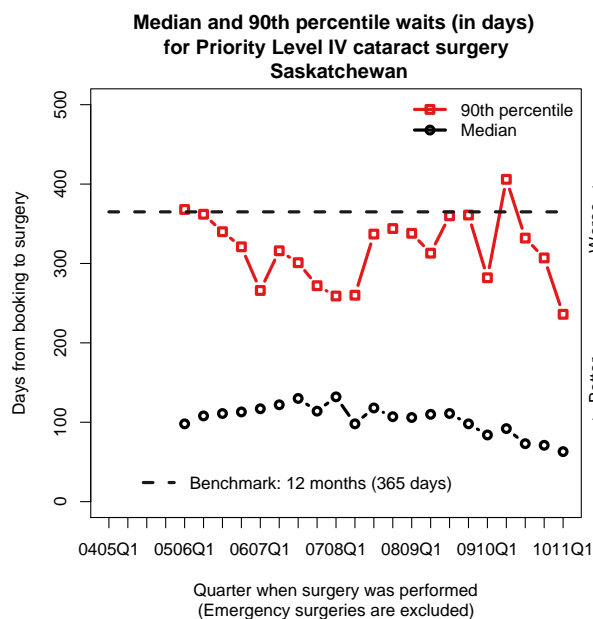
Summary of cases waiting

Measure	Saskatchewan	Regina	Saskatoon	Other Regions*
Number of cases waiting on 31-Mar-2005	3,881	1,840	1,375	666
Number of cases waiting on 30-Jun-2010	2,696	615	1,141	940
Percent of cases waiting on 31-Mar-2005 that had already waited longer than 12 months	12%	17%	7%	11%
Percent of cases waiting on 30-Jun-2010 that had already waited longer than 12 months	5%	10%	0%	7%

* Cataract surgery is also performed in Prince Albert Parkland, Five Hills, Cypress, Sunrise, Kelsey Trail and Prairie North health regions. Information on current wait times by region is available on this web site in [Wait Times/Lists \(by Specialty\)](#).

[†] The median wait time is the time by which 50% of cases had surgery.

[‡] The 90th percentile wait time is the time by which 90% of cases had surgery.



Notes

- The Priority Level IV cataracts are the lower risk cataract patients. Emergency cases (if any) are excluded.
- No data is shown for 2004-05 because some of the cases performed in that year were booked prior to the establishment of the Registry and were not assigned to Registry priority levels.
- Results are based on the August 3, 2010 refresh of the SSCN Surgical Patient Registry data mart.